

# Does your folding carton vendor help...

- Respond faster to market demands?
- Your package to be on the shelf first?
- Shorten lead times, reduce inventories and forecasting errors?

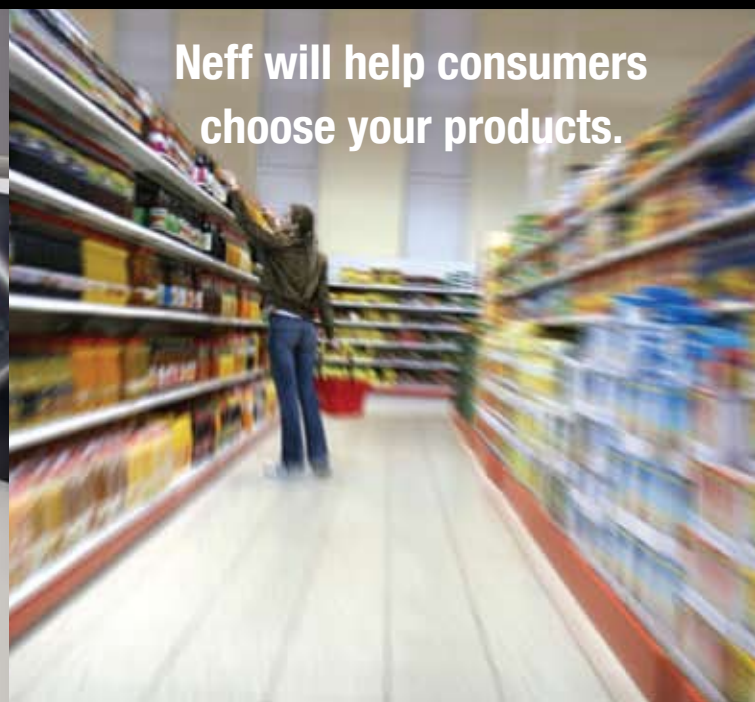
## Take a closer look at Neff

We've been delivering packaging solutions for more than fifty years.



ISO 9001:2000 Registered, cGMP Compliant, FSC Certified

# NEFF Packaging Solutions





## ■ How satisfied are you with your total packaging costs?

Compelling packaging that gets there fast is only as good as its ability to be cost efficient. That's where Neff comes in.

Our manufacturing technologies allow us to proactively help our clients to control costs. We have helped our clients experience a 10 to 20 percent improvement in line efficiencies.

## ■ How important is market share to your strategy?

Our compelling marketing and packaging techniques help build brand loyalty.

- Direct consumer sampling – that beats the others to market
- Retail sampling – that exceeds sales expectations
- Multi and club packs – that increase market share
- Value added packaging – that increases sales

## ■ How well are your suppliers looking out for you?

Neff gives you “Peace of Mind” once we are on the job we will not let you down.

You will experience a team of experts to integrate graphic

design, customer service, materials, inventory management, packaging engineering, and manufacturing excellence to exceed your expectations.



## How does Neff manufacturing capabilities control packaging costs?

Faster production means efficiency and expediting your project timelines. We know the importance of speed-to-market and have the presses to make sure this happens, day-in and day-out.

Our fast production can keep up with your sales requirements; which means your inventories are reduced. Neff's lean operation benefits your bottom line.

## Who's the fastest in the nation? Neff.

Neff has the nation's latest and fastest printing presses (18,000 sheets per hour), die cutters (12,000 sheets per hour), and high speed gluers (120,000 cartons per hour). Neff selected Heidelberg presses as they are the only manufacturer with fully integrated print shop workflow ensuring color consistency and the most efficient production.

Our technology (Heidelberg presses and Sprintera die cutters), gives the term *lean manufacturing* a whole new meaning.

**We lead in our industry – so that you can lead in yours.**





## ■ **Neff Environmental Policy**

We recognize that efficient resource use and protection of the environment are vital for the continued success of our operations and provide a valuable benefit to our customers and community. Therefore, Neff Packaging Solutions is committed to conducting its business and operations in an environmentally sensitive and responsible manner and regularly reviews its environmental objectives and targets to assure that they are consistent with this Environmental Policy. Neff Packaging Solutions is committed to:

- Preventing pollution including the reduction in VOC's and other green house gas emissions
- Reducing the environmental impact of its operations on the community
- Meeting all applicable environmental legislation, regulations, and standards set by statute or by other recognized regulatory bodies, including other environmental requirements to which Neff Packaging Solutions subscribes
- Continuous improvement of its environmental management process and performance

***Nothing from our new facility leaves for the land-fill,  
and we are proud to be FSC certified.***

***Bob Neff, President, Neff Packaging Solutions***



# **NEFF** Packaging Solutions

**10 Kingbrook Parkway**

**Simpsonville, KY 40067**

**Tel: (800) 233-7782**

**Fax: (502) 722-5070**

**[info@neffpackaging.com](mailto:info@neffpackaging.com)**

**[www.neffpackaging.com](http://www.neffpackaging.com)**